



S6000R DC Switch - disconnecter base mounting 1P - 2P

Size 1
A 160|200|250|315|400
1500Vdc

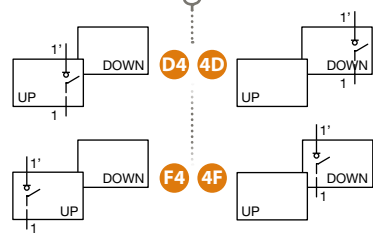
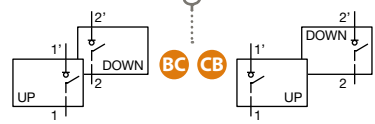


CODE - 2P

160 A	S6R0160_S0
200 A	S6R0200_S0
250 A	S6R0250_S0
315 A	S6R0315_S0
400 A	S6R0400_D0

CODE - 1P

160 A	S6R0160_S0
200 A	S6R0200_S0
250 A	S6R0250_S0
315 A	S6R0315_S0
400 A	S6R0400_D0



Technical information



According to IEC 60947-1
IEC 60947-3

		160	200	250	315	400	
Rated thermal current in ambient at 40°C up to 80°C	I _{th}	A	160	200	250	315	400
Rated insulation voltage (DC)	U _i	V	1500	1500	1500	1500	1500
Rated dielectric strength	50 Hz., 1 min.	V	5000	5000	5000	5000	5000
Rated impulse withstand voltage	U _{imp}	kV	12	12	12	12	12
Rated operational current ^{*(1)}	I _e U _e		160	200	250	315	400
DC21B			1500Vdc				A

Short - circuit behaviour

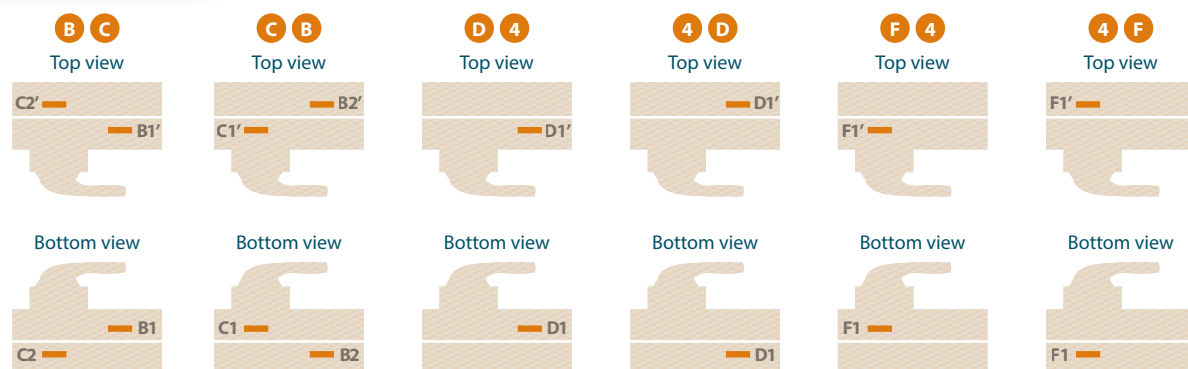
Rated short-circuit making capacity ^{*(2)}	I _{cm}	kA (peak)	10
Rated short-time withstand current (1sec)	I _{cw}	kA rms	10

Mechanical features

Minimum number of mechanical operations ^{*(3)}	Cycles	8000
---	--------	------

^{*(1)} Other voltages and / or utilization categories. Please consult
^{*(2)} Without limiting protective device (short-circuit maintained 50... 100 ms.)
^{*(3)} Please consult us for more operations

Terminals location



Accessories

Direct handle
CODE DS-SI11

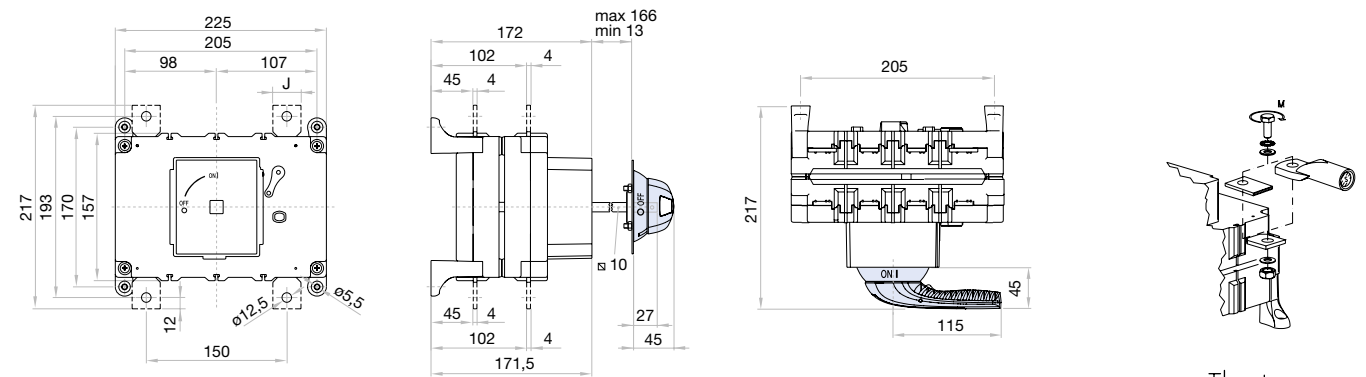
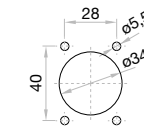
External handle included shaft ^{*(e1)}
IP65|UL50E/NEMA 250
Types: 1, 3R, 4, 4X y 12
CODE DS-SA11

Auxiliary contacts
1NO+1NC CODE D5LAU01
2NO+2NC CODE D5LAU02
I_e = 16 A (resistive loads)
4 A (inductive loads) at 250 Vac.

Shafts
Standard shaft included ^{*(e1)}
L (mm) | P (mm) |
227 | 179... 398,5 |
Shaft extensions
Type 1
L (mm) | P (mm) | CODE
375 | 179... 546,5 | DS-EP14
Type 2
L (mm) | P (mm) | CODE
536 | 179... 707,5 | DS-EP15

Dimensions (mm)

Door drilling for external handle



	J	S max (Cu) mm ²	H max (Cu) mm	L max (Cu) mm	T	M _{-10%} ^{+5%} Nxmm
160 A	25	160 A 185	8	25	M12	24
200 A	25	200 A 185	8	25	M12	24
250 A	25	250 A 185	8	25	M12	24
315 A	25	315 A 185	8	25	M12	24
400 A	30	400 A 240	8	30	M12	24



S6000R DC UL Switch - disconnecter base mounting 1P - 2P

Size 1

A 250|320|400

1500Vdc

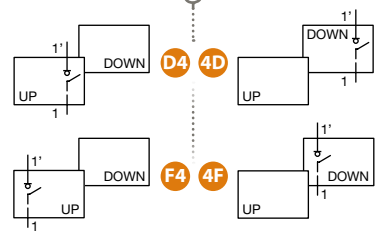
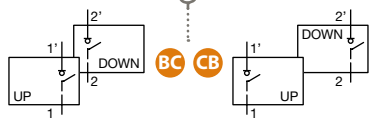


CODE - 2P

250 A	S6R0250	S00L
320 A	S6R0320	S00L
400 A	S6R0400	D00L

CODE - 1P

250 A	S6R0250	S00L
320 A	S6R0320	S00L
400 A	S6R0400	D00L



Accessories

External handle included shaft ^{*(e1)}

IP65|UL50E/NEMA 250
Types: 1, 3R, 4, 4X y 12
CODE DS-SA11

Auxiliary contacts

1NO+1NC CODE D5LAU01
2NO+2NC CODE D5LAU02

Ie = 16 A (resistive loads)
4 A (inductive loads) at 250 Vac.

Shafts

Standard shaft included ^{*(e1)}

(mm)	L (inches)	(mm)	P (inches)
227	8.94	185...336	7.28...13.23

Shaft extensions

Type 1

(mm)	L (inches)	(mm)	P (inches)	CODE
375	14.76	185...486	7.28...19.13	DS-EP14

Type 2

(mm)	L (inches)	(mm)	P (inches)	CODE
536	21.16	185...647	7.28...25.47	DS-EP15

Technical information



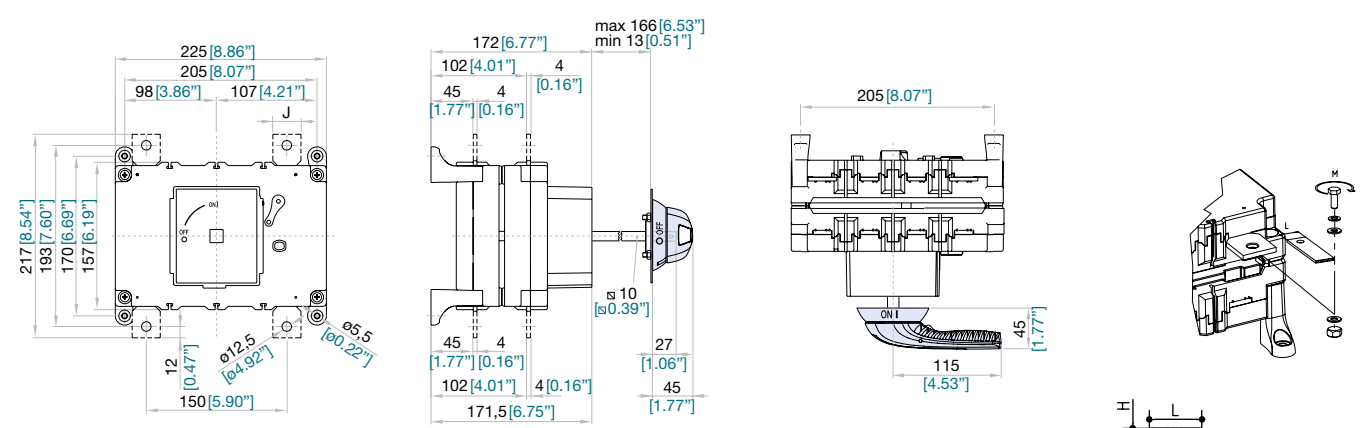
tests: **AIT** AUSTRIAN INSTITUTE OF TECHNOLOGY TOMORROW TODAY

According to UL98 B

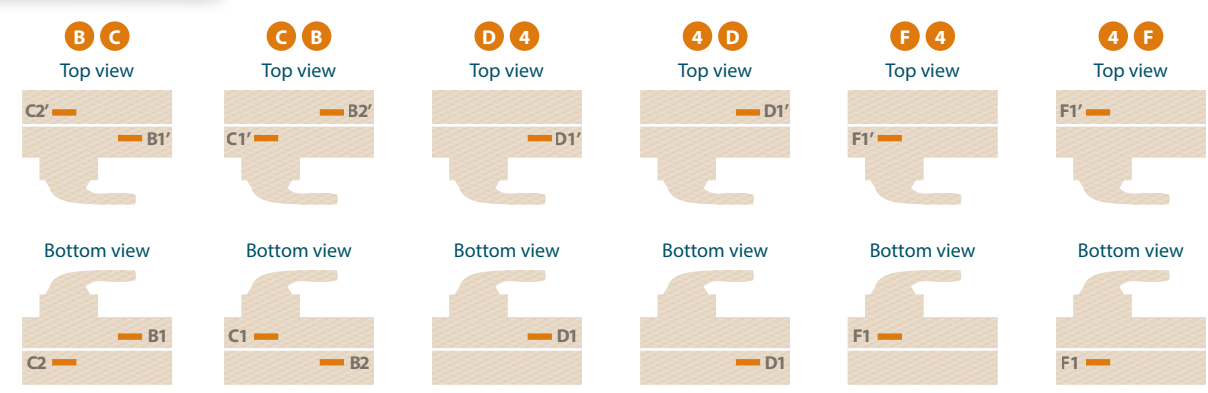
LISTED E333311		250	320	400
Rated thermal current I _{th}	-20°C up to 50°C	A 250	A 320	A 400
Rated operational current I _e	1500Vdc	A 250	A 320	A 400
Rated short-time withstand current (0,05 sec) I _{cs}		kA 10	kA 10	kA 10
Maximum weight		Consult according to code		
Wiring capacity				
Minimum busbar connection range	mm ²	2x 4x30	2x 4x32	2x 4x32

Conforms to UL98B. Minus -20 to 50°C. PV disconnect switch. Location Category B
Suitable for use in PV Systems in accordance with Article 690 of the NEC

Dimensions (mm & inches)



Terminals location



	J		H max (Cu)		L max (Cu)		M ^{10%}	Nxm	lbf-in
	mm	in	mm	in	mm	in			
250 A	25	0.98	4	5/32	30	1-3/16	M12	24	212
320 A	25	0.98	4	5/32	32	1-1/4	M12	24	212
400 A	30	1.18	4	5/32	32	1-1/4	M12	24	212

DC Switch - disconnectors

series
S6RDC

High performance load-break switches to meet your safety and reliability requirements.
Available in several rating and configurations, with a variety of accessories.

According to:
IEC 60947-1 & 3
UL98 B
RoHS



Testing and approvals:



Functional and ergonomic handle

- > Good grip and excellent torque/resistance
- > Padlockable handle in **O OFF** position (up to three locks Ø 5-8 mm)
- > Door interlock in **ON I** position
- > When lock is in **O OFF** position, door is interlocked
- > Defeatable feature in **ON I** position (with the use of a tool for maintenance operations). Handle interlock is restored when closing
- > Self-centering shaft for door handle



Relevant characteristics for photovoltaic installations

- > U_i (V) Rated insulation voltage 1500 Vdc.
- > U_{oc} (V) Open circuit voltage of the photovoltaic system.
- > U_{ef} (V) Photovoltaic installation functioning voltage on load.
- > I_{ef} (A) Installation working current under load.
- > I_{sc} (A) Short-circuit current of the photovoltaic installation.
- > In certain places of Pv Systems, inductive component must be considered (cables, inverter, etc.).
- > The sizing of the switch must be done considering open circuit voltage as maximum operation voltage.

- > It is necessary to comply with:
 $U_i \geq U_{oc}$
 We recommend to set U_i between 10 and 15% over U_{oc} .
 $U_e \geq U_{ef}$
 $I_e \geq I_{ef}$
 $I_e \geq I_{sc}$

The range

IEC

	Amp.	Size	Code	Diagram	Direct handle	External handle
	160	1	S6R0160D4S0	D4	DS-SI11	DS-SA11
	200		S6R0200D4S0			
	250		S6R0250D4S0			
	315		S6R0315D4S0			
	400		S6R0400D4D0			
	160	1	S6R01604DS0	4D	DS-SI11	DS-SA11
	200		S6R02004DS0			
	250		S6R02504DS0			
	315		S6R03154DS0			
	400		S6R04004DD0			
	160	1	S6R0160F4S0	F4	DS-SI11	DS-SA11
	200		S6R0200F4S0			
	250		S6R0250F4S0			
	315		S6R0315F4S0			
	400		S6R0400F4D0			
	160	1	S6R01604FS0	4F	DS-SI11	DS-SA11
	200		S6R02004FS0			
	250		S6R02504FS0			
	315		S6R03154FS0			
	400		S6R04004FD0			
	160	1	S6R0160BCS0	BC	DS-SI11	DS-SA11
	200		S6R0200BCS0			
	250		S6R0250BCS0			
	315		S6R0315BCS0			
	400		S6R0400BCD0			
	160	1	S6R0160CBS0	CB	DS-SI11	DS-SA11
	200		S6R0200CBS0			
	250		S6R0250CBS0			
	315		S6R0315CBS0			
	400		S6R0400CBD0			

UL

	Amp.	Size	Code	Diagram	Direct handle	External handle
	250	1	S6R0250D4S00L	D4	-	DS-SA11
	320		S6R0320D4S00L			
	400		S6R0400D4D00L			
	250	1	S6R02504DS00L	4D	-	DS-SA11
	320		S6R03204DS00L			
	400		S6R04004DD00L			
	250	1	S6R0250F4S00L	F4	-	DS-SA11
	320		S6R0320F4S00L			
	400		S6R0400F4D00L			
	250	1	S6R02504FS00L	4F	-	DS-SA11
	320		S6R03204FS00L			
	400		S6R04004FD00L			
	250	1	S6R0250BCS00L	BC	-	DS-SA11
	320		S6R0320BCS00L			
	400		S6R0400BCD00L			
	250	1	S6R0250CBS00L	CB	-	DS-SA11
	320		S6R0320CBS00L			
	400		S6R0400CBD00L			